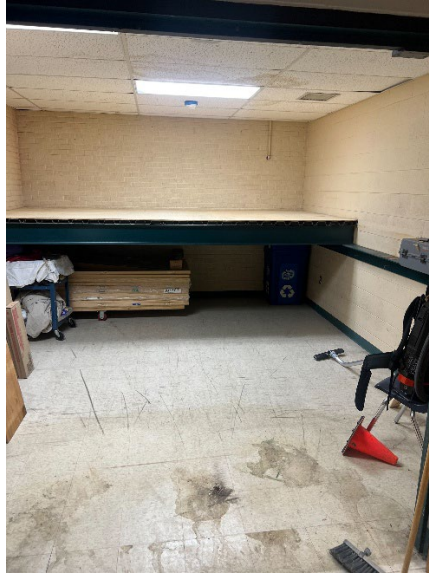




Facilities Report December 2025



- Removed part of the structural steel frame from closet off of MS cafeteria (where wrestling mats were previously stored) to make more usable storage space.
- Got quotes and now working with the ISD on an RFP for upgrades to the GSRP room including lower countertops and plumbing fixtures which will be more cohesive for the size of the students.
- Work has started on the peeling paint on the handrails in the HS for the high traffic areas which tentatively should be repainted over break.