

1 UPPER COMPOSITE PLAN  
 1" = 20'-0"

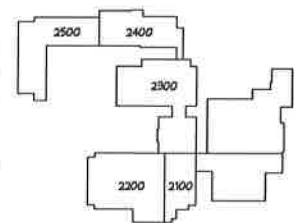
DANSVILLE SCHOOLS  
 ADDITION / RENOVATIONS  
 DANSVILLE SCHOOLS  
 1264 ADAMS ST.  
 DANSVILLE, MI 48819



Dansville  
 School District

ISSUANCES DATE  
 CONSTRUCTION SET 07/31/2017

Revisions		
No.	Date	Description
PBA2	06/19/2017	POST BID ADDENDUM 2



JOB NO. 2125.04

SHEET TITLE  
 UPPER COMPOSITE PLAN

SHEET NO.  
**A0.2X**

## DANSVILLE SCHOOLS ADDITION / RENOVATIONS DANSVILLE SCHOOLS

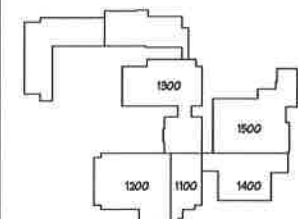
1264 ADAMS ST.  
 DANSVILLE, MI 48819



Dansville  
 School District

ISSUANCES DATE  
 CONSTRUCTION SET 01/31/2017

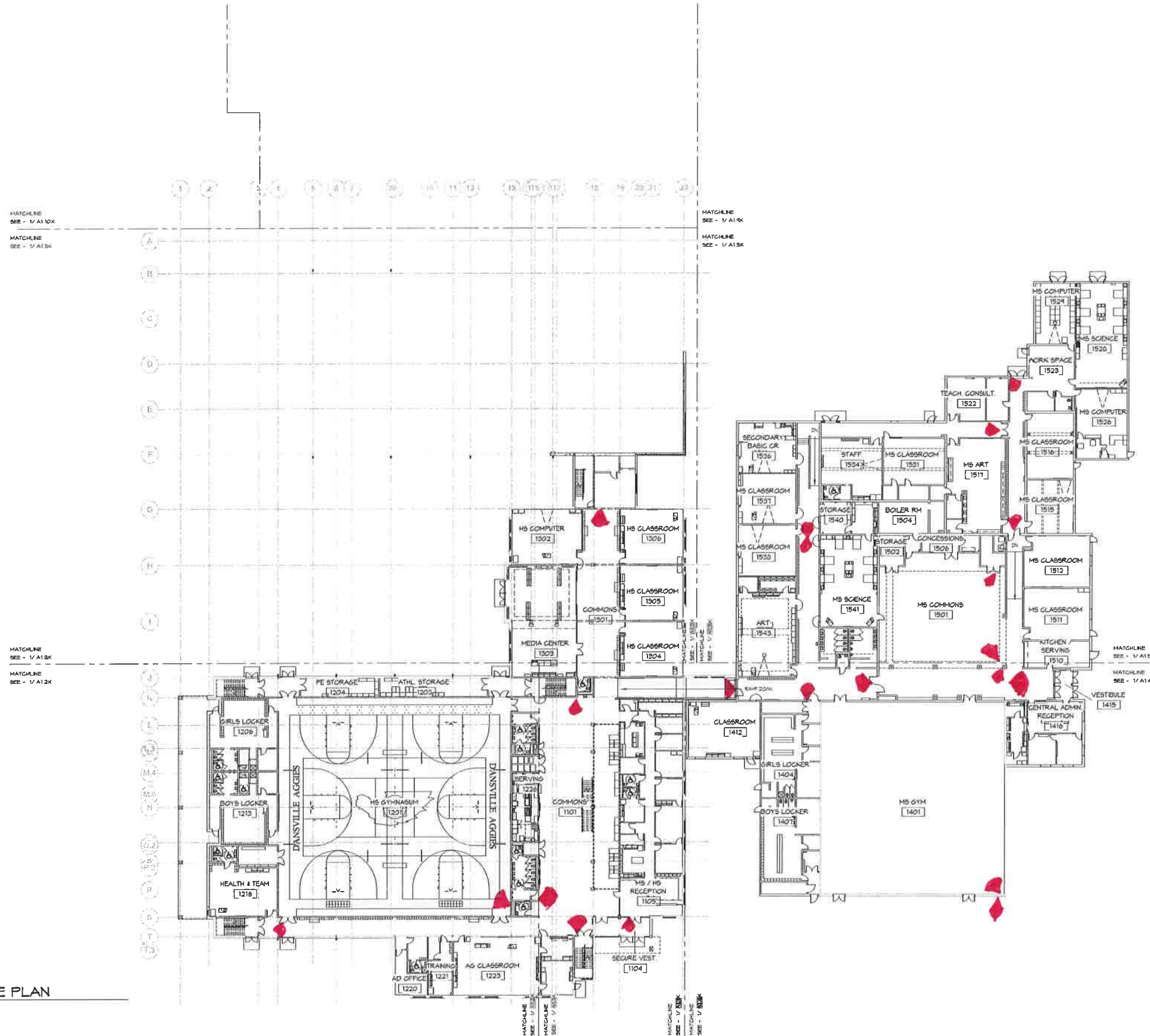
Revisions		
No.	Date	Description
PBA2	06/19/2017	POST BID ADDENDUM 2



JOB NO. 2125.04  
 NORTH

SHEET TITLE  
 LOWER COMPOSITE  
 PLAN

SHEET NO.  
**A0.1X**



**1 LOWER COMPOSITE PLAN**  
 1" = 20'-0"